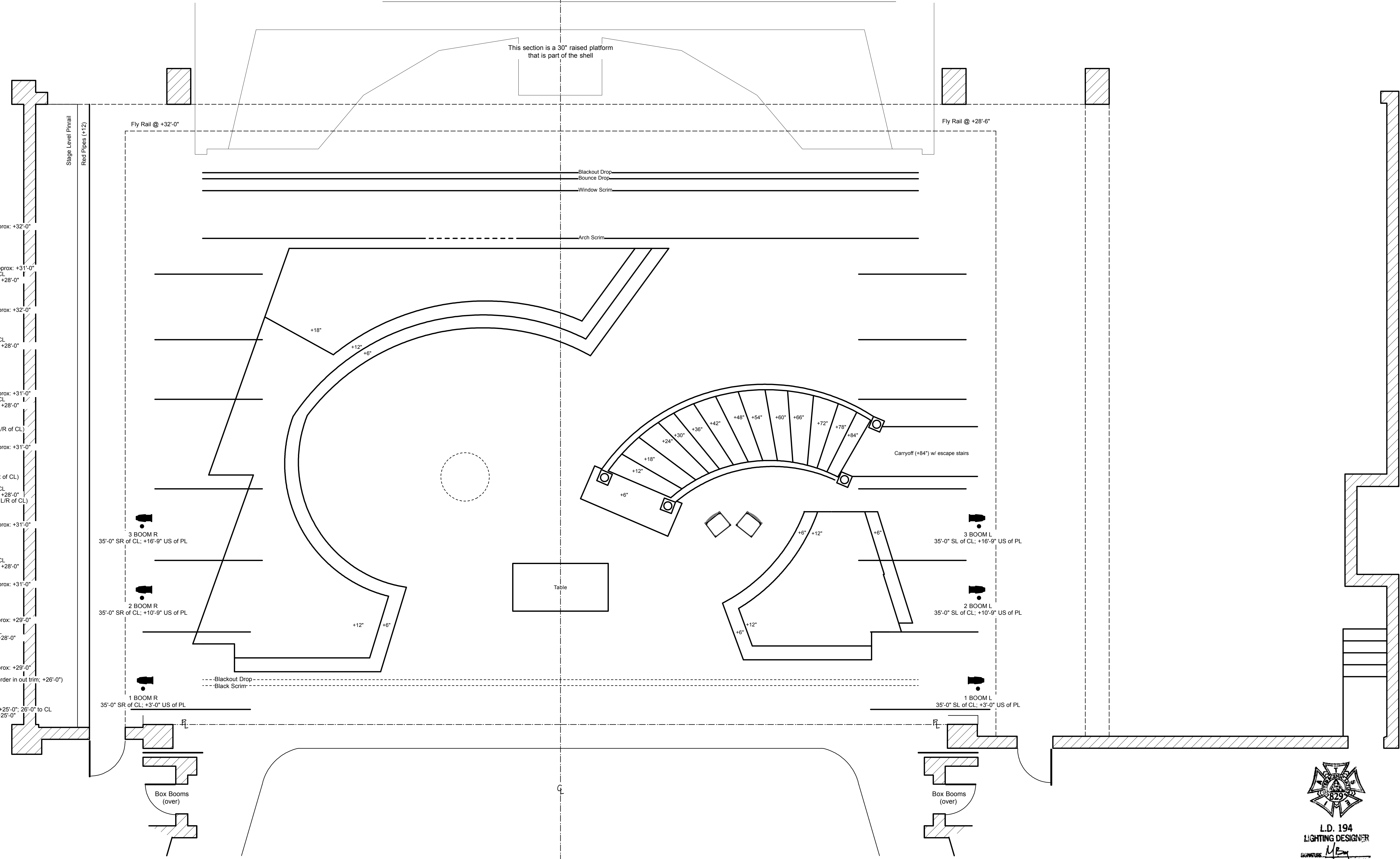


- 85: 47'-3"
84: 46'-9"
83: 46'-3" Blackout Drop
82: 45'-9" Bounce Drop
81: 45'-3" III: Red Window Scrim
80: 44'-9" II: Scrim
79: 44'-3" I: Window Scrim
78: 43'-9"
77: 43'-3"
76: 42'-9"
75: 42'-3"
74: 41'-9" 9 ELECTRIC; Trim to approx: +32'-0"
73: 40'-9" I: Arch Scrim
72: 40'-3" US Black Scrim
71: 39'-9"
70: 39'-3"
69: 38'-9"
68: 38'-3" 8 ELECTRIC; Trim to approx: +31'-0"
67: 37'-9" #7 Black Legs; 25'-0" to CL
66: 37'-3" #7 Black Border; Trim to: +28'-0"
65: 36'-9"
64: 36'-3" FOCUS TRACK #5
63: 35'-9"
62: 35'-3"
61: 34'-9" 7 ELECTRIC; Trim to approx: +32'-0"
60: 34'-3"
59: 33'-9"
58: 33'-3"
57: 32'-9"
56: 32'-3" #6 Black Legs; 25'-0" to CL
55: 31'-9" #6 Black Border; Trim to: +28'-0"
54: 31'-3"
53: 30'-3" IV: Scrim
52: 29'-9"
51: 29'-3"
50: 28'-9"
49: 28'-3"
48: 27'-9" 6 ELECTRIC; Trim to approx: +31'-0"
47: 27'-3" #5 Black Legs; 25'-0" to CL
46: 26'-9" #5 Black Border; Trim to: +28'-0"
45: 26'-3"
44: 25'-9"
43: 25'-3"
42: 24'-9" IV: US Hangings (7'-9" L/R of CL)
41: 24'-3"
40: 23'-9"
39: 23'-3" 5 ELECTRIC; Trim to approx: +31'-0"
38: 22'-9"
37: 22'-3"
36: 21'-9" FOCUS TRACK #4
35: 21'-3"
34: 20'-9" I: Chandelier Pick (8' SR of CL)
33: 19'-9" #4 Black Legs; 25'-0" to CL
32: 19'-3" #4 Black Border; Trim to: +28'-0"
31: 18'-9" IV: DS Hangings (12'-0" L/R of CL)
30: 18'-3"
29: 17'-9"
28: 17'-3"
27: 16'-9" 4 ELECTRIC; Trim to approx: +31'-0"
26: 16'-3"
25: 15'-9" FOCUS TRACK #3
24: 15'-3" Snow Bag-US Line
23: 14'-9"
22: 14'-3" Snow Bag-DS Line
21: 13'-9" #3 Black Legs; 25'-0" to CL
20: 13'-3" #3 Black Border; Trim to: +28'-0"
19: 12'-9"
18: 12'-3"
17: 11'-9" 3 ELECTRIC; Trim to approx: +31'-0"
16: 11'-3"
15: 10'-9"
14: 10'-3" FOCUS TRACK #2
13: 9'-3"
12: 8'-9" 2 ELECTRIC; Trim to approx: +29'-0"
11: 8'-3"
10: 7'-9" #2 Black Legs; 26'-0" to CL
9: 7'-3" #2 Black Border; Trim to: +28'-0"
8: 6'-9"
7: 6'-3" FOCUS TRACK #1
6: 4'-9" 1 ELECTRIC; Trim to approx: +29'-0"
5: 3'-9" Blackout Drop (use as Border in out trim; +26'-0")
4: 3'-3" DS Black Scrim
3: 2'-3" Main Curtain
2: 1'-3" #1 Black Border & Legs; +25'-0"; 26'-0" to CL
1: 0'-9" Surtitle Screen; Trim to: +25'-0"

Line List



REVISED: 15 DECEMBER 2010
REVISED LINE LIST/SNOW BAG

Opera Carolina
Belk Theater--North Carolina PAC

La Traviata

Ground Plan-Act I 1/4" = 1'-0"

Scenery by: Lloyd Evans
Lighting by: Michael Baumgarten

Plate 1 of 4
10 June 2010