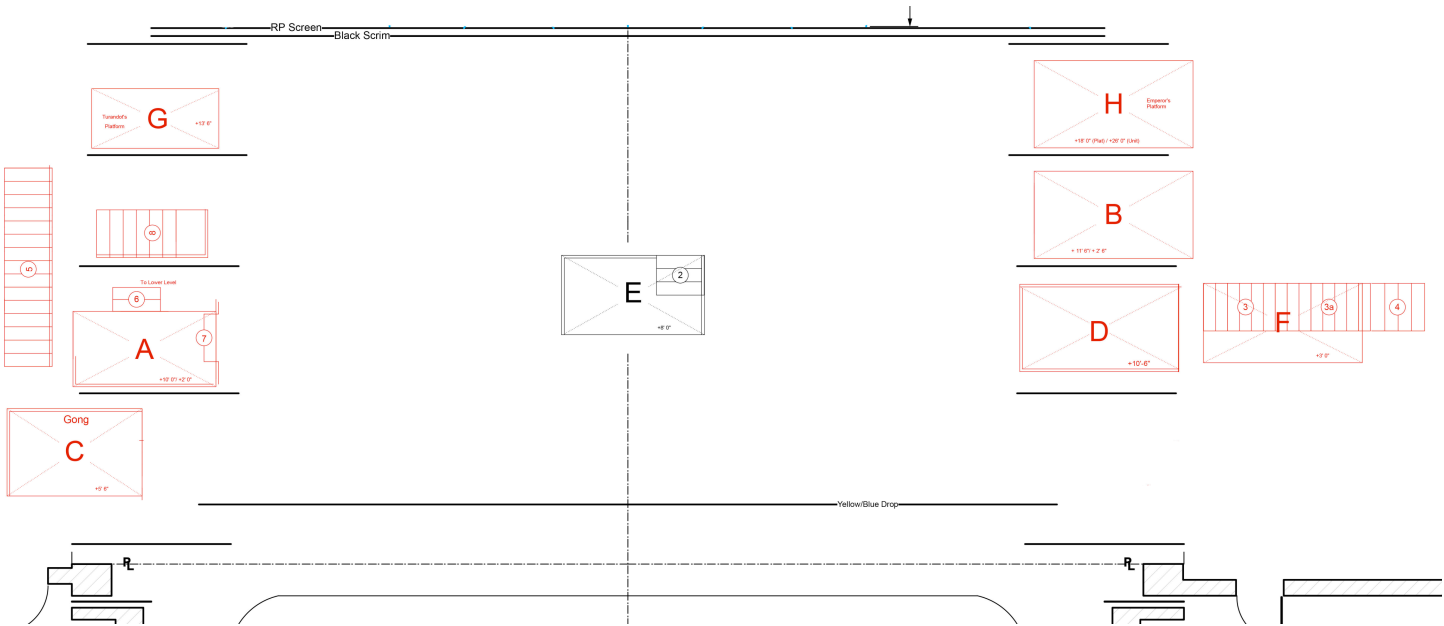


TOP OF SHOW - PRESET

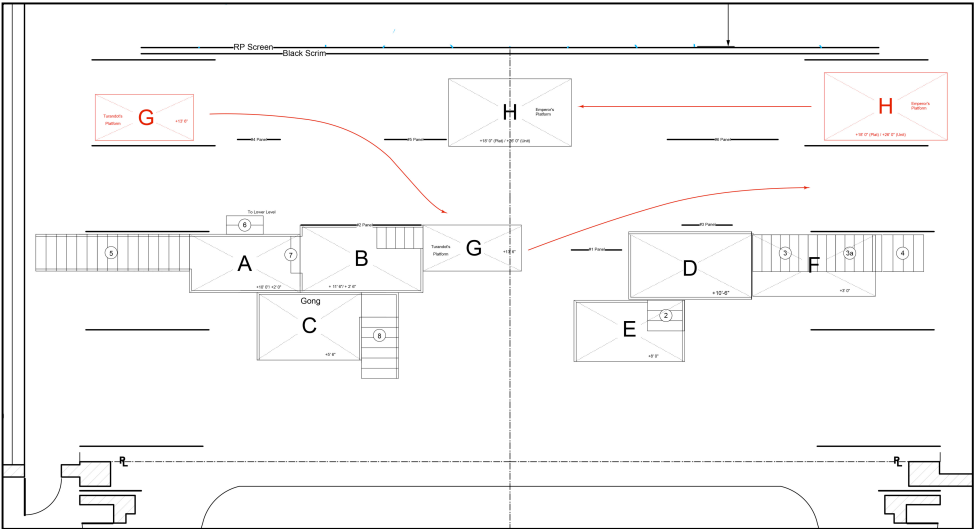


SHIFT INTO ACT 1B

SHIFT NOTES:

CUE/TIME	WHAT	ACTION	WHO	WHERE	NOTES
PRESHOW	G PLATFORM	ASSIST PLACE	CREW CREW	USL LOADING DOCK USR 4	STRAP TURANDOT DOUBLE IN IN WING
ONSTAGE SET CHANGE	A PLATFORM	PLACE	CREW	SR 3	ONSTAGE, JUST PAST WING
	STAIR 5	PLACE	CREW	SR 2	IN WING, TO A; LOCK STAIRS
	STAIR 4	PLACE	CREW	SL 2	IN WING, TO STEP 3A ON F; LOCK
15:30	G PLATFORM	RECEIVE ASSIST	CREW CREW	USL 4 USL LOADING DOCK	FROM SUPERS TURANDOT DOUBLE FROM PLATFORM

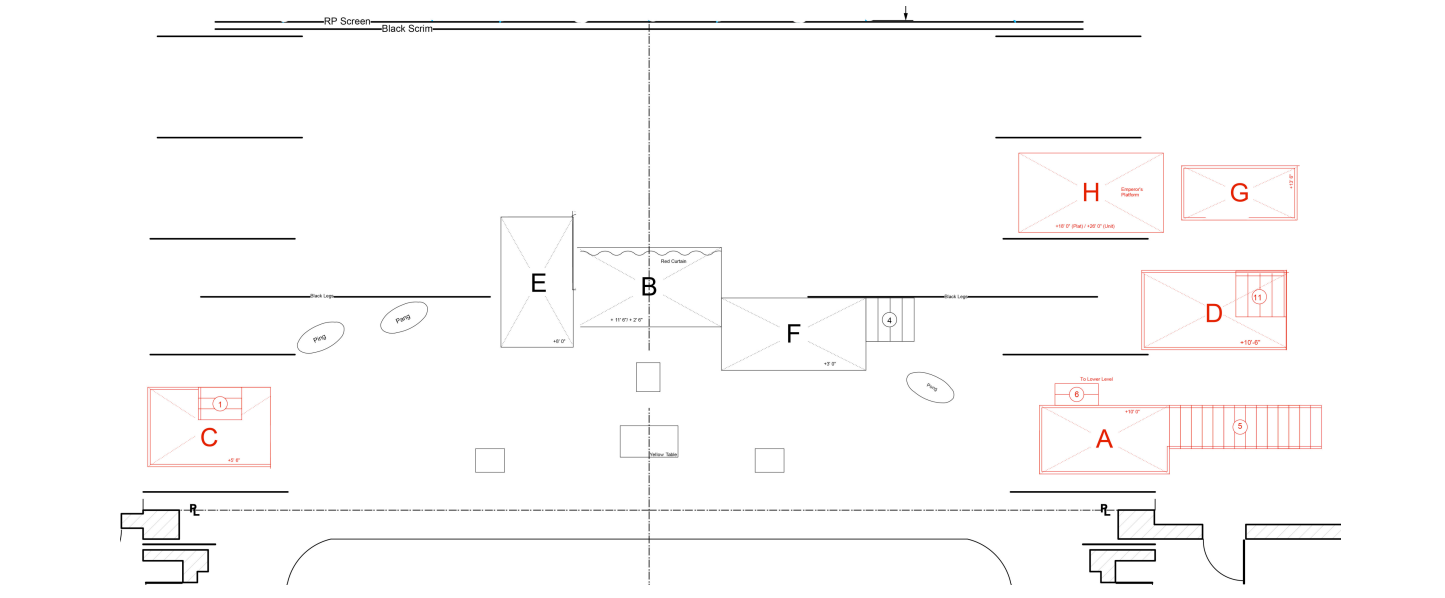
Look after 1st shift



INTERMISSION SHIFT INTO ACT IIA (SPIKED IN BROWN ONSTAGE)

TIME:	WHAT:	ACTION:	WHERE:	NOTES:
END ACT I	B PLATFORM	TRACK	SR→ACT II PRESET ONSTAGE	
	E PLATFORM	TRACK	SL→ACT II PRESET ONSTAGE	
	F PLATFORM	TRACK	SL→ACT II PRESET ONSTAGE	
	PING WAGON	TRACK	SR→ACT II PRESET ONSTAGE	SR
	PANG WAGON	TRACK	SR→ACT II PRESET ONSTAGE	FAR SR
	PONG WAGON	TRACK	SL→ACT II PRESET ONSTAGE	SL
	STAIR 4	TRACK	SL WING→ACT II PRESET ONSTAGE	
	A PLATFORM	TRACK	STAGE→ACT II PRESET OFFSTAGE	SL WING
	C PLATFORM	TRACK	STAGE→ACT II PRESET OFFSTAGE	SR WING
	D PLATFORM	TRACK	STAGE→ACT II PRESET OFFSTAGE	SL WING
	STAIR 5	TRACK	STAGE→ACT II PRESET OFFSTAGE, TO A PLATFORM	SL WING
	STAIR 8	TRACK	STAGE→ACT II PRESET OFFSTAGE	SR WING
	STAIR 2	TRACK	E PLATFORM→OFF SR	
	STAIR 1	SET	STORAGE→ON C PLATFORM	SR WING
	STAIR 11	SET	STORAGE→ON D PLATFORM	SL WING
	STAIR 6	SET	STORAGE→BY A PLATFORM	SL WING
	RED CURTAIN	SET	STORAGE→ON B PLATFORM	ONSTAGE

ONSTAGE SETUP
ACT IIA

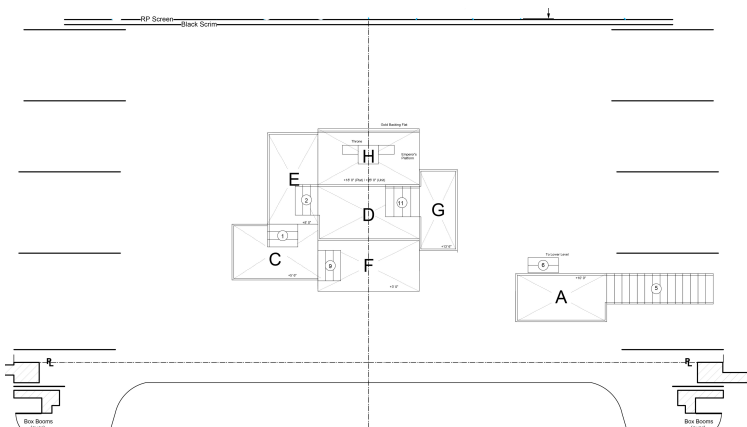


SEE NEXT PAGE FOR SHIFT NOTES

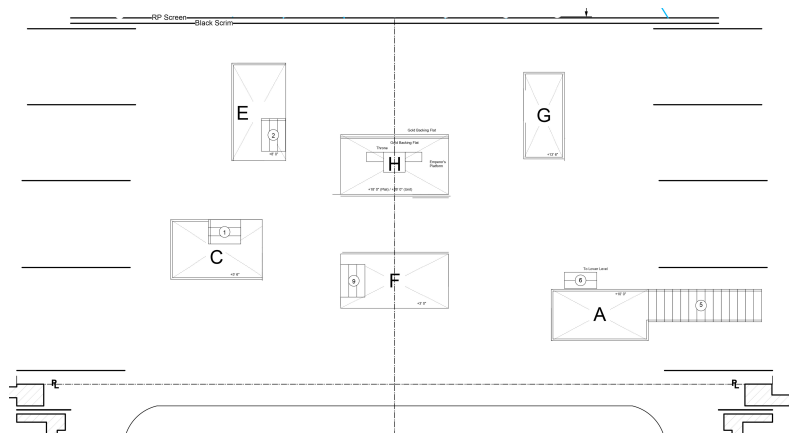
SHIFT NOTES:

CUE/TIME	WHAT	ACTION	WHO	WHERE	NOTES
9:00	H PLATFORM	ASSIST	CREW	USL DOCK	EMPEROR ON TOP
11:30	E PLATFORM	RECEIVE	CREW	SR 3 WING	FROM SUPERS
	B PLATFORM	RECEIVE	CREW	USR 4 WING	FROM SUPERS; DEAD
	F PLATFORM	RECEIVE	CREW	SL 2 WING	FROM SUPERS; ALL THE WAY BACK
	STEP 4	RECEIVE	CREW	SL 2 WING	FROM SUPERS; SET ASIDE
12:00	D PLATFORM	MOVE	CREW	SL 3→SL 2 WING	IN FRONT OF F PLATFORM
	STEP 2	PLACE	CREW	OFF SR→E PLATFORM	
	STEP 9	PLACE	CREW	STORAGE→F PLATFORM	
12:30	G PLATFORM	ASSIST	CREW	USL DOCK	TURANDOT ON TOP
13:00	H PLATFORM	PLACE	CREW	SL 3 WING	
15:00	G PLATFORM	PLACE	CREW	SL 3 WING	
21:00	STEP 5	ASSIST	CREW	SL 1 WING	TO A; LOCK STAIRS
	F PLATFORM	ASSIST	CREW	SL 2 WING	ASSIST SUPERS IN WING
36:00	D PLATFORM	RECEIVE	CREW	SL 2 WING	FROM SUPERS; DEAD

Look after 2nd shift
(after clear stage)



Look after 3rd shift
(after “blow apart”)

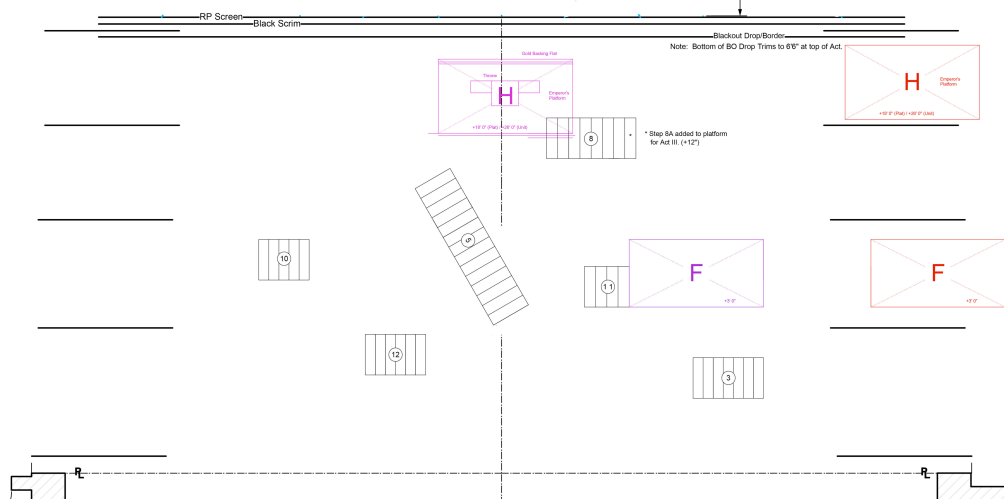


SEE NEXT PAGE FOR INTERMISSION #2 SHIFT

INTERMISSION SHIFT INTO ACT IIIA (SPIKED IN YELLOW ONSTAGE)

TIME:	WHAT:	ACTION:	WHERE:	NOTES:
END ACT II	A PLATFORM	STRIKE	STAGE → STORAGE	DEAD
	C PLATFORM	STRIKE	STAGE → STORAGE	DEAD
	E PLATFORM	STRIKE	STAGE → STORAGE	DEAD
	G PLATFORM	STRIKE	STAGE → STORAGE	DEAD
	STAIR 5	TRACK	STAGE → ACT III PRESET ONSTAGE	REMOVE RAILING
	STAIR 8	TRACK	STAGE → ACT III PRESET ONSTAGE	REMOVE RAILING
	STAIR 3	TRACK	OFFSL → ACT III PRESET ONSTAGE	REMOVE RAILING
	STAIR 11	TRACK	D PLATFORM → ACT III PRESET ONSTAGE	FROM SLWING
	STAIR 10	TRACK	STORAGE → ACT III PRESET ONSTAGE	
	STAIR 12	TRACK	STORAGE → ACT III PRESET ONSTAGE	
	H PLATFORM	TRACK	STAGE → USL DOCK	UNLOAD EMPEROR
	F PLATFORM	TRACK	STAGE → OFF SL 2	SET STAIRS BEHIND FOR TURANDOT
	PING WAGON	TRACK	STAGE → OFF SL	
	PANG WAGON	TRACK	STAGE → OFF SL	
	PONG WAGON	TRACK	STAGE → OFF SL	

ONSTAGE SETUP
ACT IIIA



SHIFT NOTES:

CUE/TIME	WHAT	ACTION	WHO	WHERE	NOTES
5:00	F PLATFORM	ASSIST	CREW	SL 2	TURANDOT ONTO PLATFORM
25:15	STEP 3	RECEIVE	CREW	SL 1	FROM CORO; DEAD
	F PLATFORM	RECEIVE	CREW	SL 2	FROM SUPERS; DEAD
	STEP 11	RECEIVE	CREW	SL 2	FROM SUPERS; DEAD
	STEP 8	RECEIVE	CREW	USL	FROM CORO; DEAD
	STEP 12	RECEIVE	CREW	SR 1	FROM SUPERS; DEAD
	STEP 10	RECEIVE	CREW	SR 2	FROM SUPERS; DEAD
	STEP 5	RECEIVE	CREW	USR	FROM SUPERS; DEAD
26:00	H PLATFORM	ASSIST	CREW	USL DOCK	EMPEROR ON TOP
30:00	H PLATFORM	PRESET	CREW	USL 4	AFTER SIDE PIPE IS CLEAR
	PING/PANG/PONG WAGONS	PRESET	CREW	NEAR USL 3	FOR FINAL ENTRANCE
35:00	H PLATFORM	SET	CREW	ONSTAGE	AFTER RED CURTAIN IS IN, ON YELLOW SPIKE
40:55	END OF OPERA				